

**South Cambridgeshire
Proposed Submission
Policies Map: July 2013**
Inset No. 2 Arrington
Map 1 of 1
Scale 1:5000

Reproduced from the Ordnance Survey Mapping with the permission of the Controller of Her Majesty's Stationery Office © Crown Copyright. Unauthorised reproduction infringes Crown Copyright and may lead to prosecution or civil proceedings.

NO FURTHER COPIES MAY BE MADE. SCDC Licence 100022500 (2013)



GB14 (1a)
(NOTE: no policy area
in Draft Local Plan)

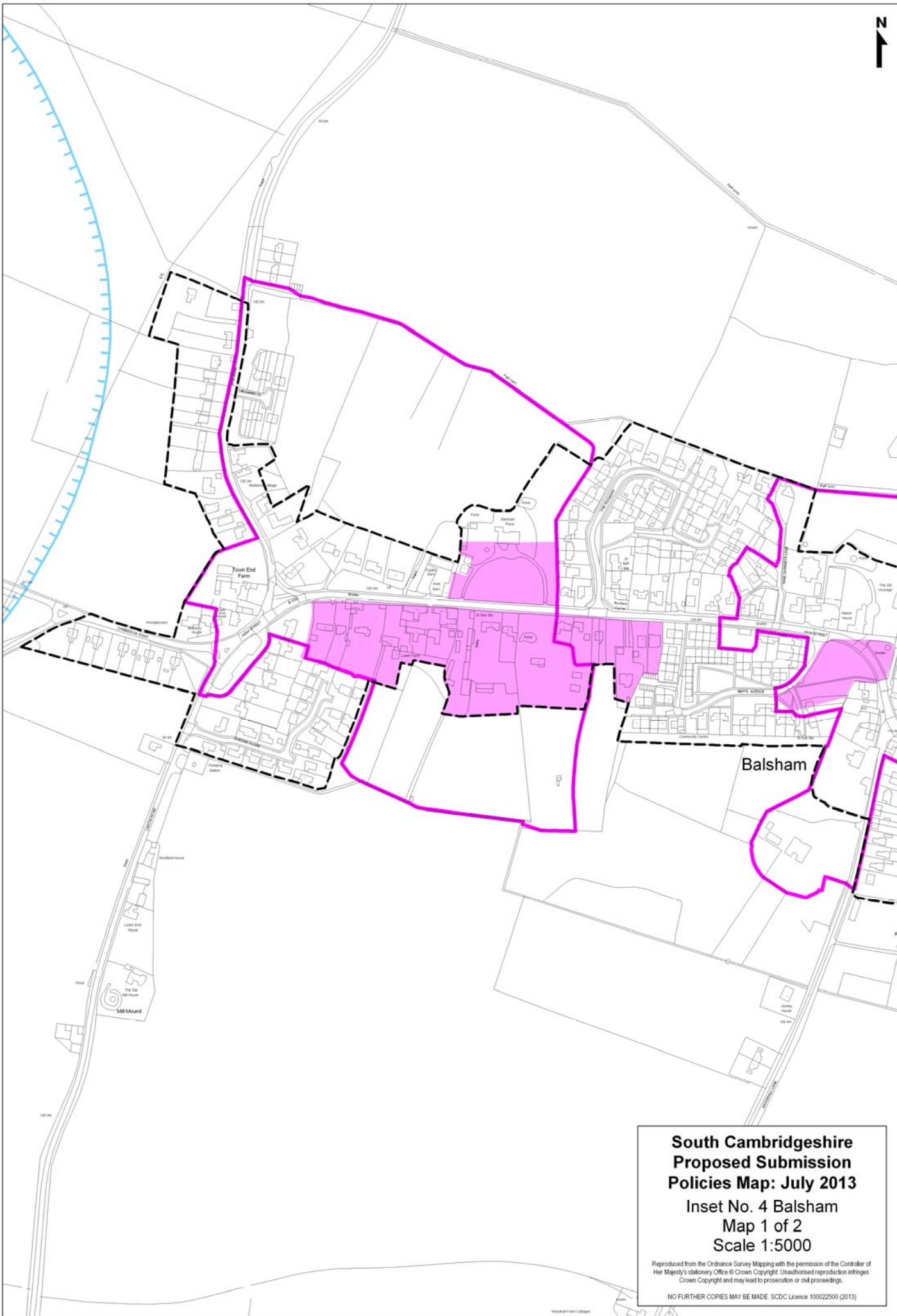
Babraham

**South Cambridgeshire
Proposed Submission
Policies Map: July 2013**

**Inset No. 3 Babraham
Map 1 of 1
Scale 1:5000**

Reproduced from the Ordnance Survey Mapping with the permission of the Controller of Her Majesty's Stationery Office © Crown Copyright. Unauthorised reproduction infringes Crown Copyright and may lead to prosecution or civil proceedings.

NO FURTHER COPIES MAY BE MADE. SCDC Licence 100022500 (2013)

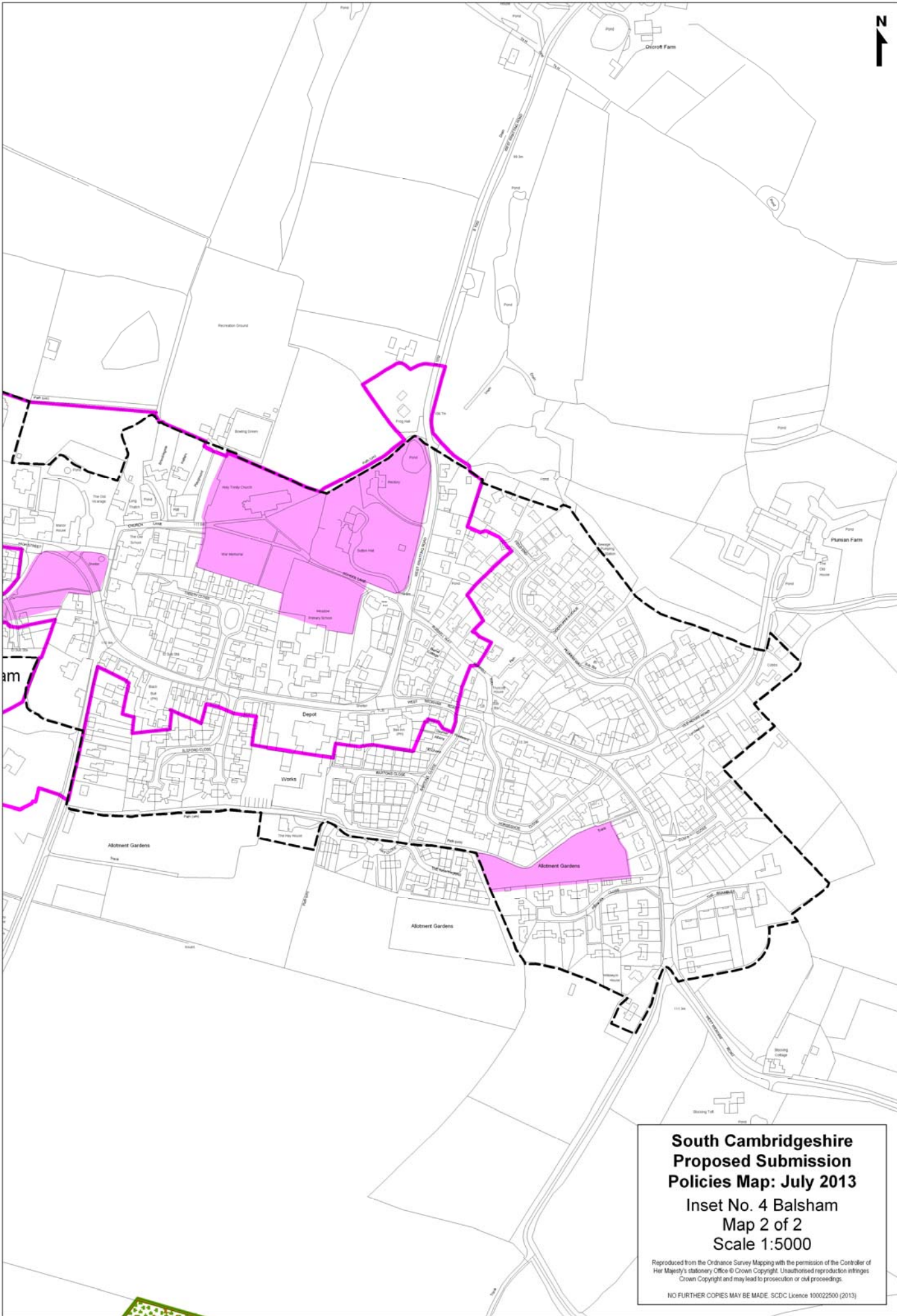


**South Cambridgeshire
Proposed Submission
Policies Map: July 2013**

**Inset No. 4 Balsham
Map 1 of 2
Scale 1:5000**

Reproduced from the Ordnance Survey Mapping with the permission of the Controller of Her Majesty's Stationery Office © Crown Copyright. Unauthorised reproduction infringes Crown Copyright and may lead to prosecution or civil proceedings.

NO FURTHER COPIES MAY BE MADE. SCDC Licence 100022500 (2013)



**South Cambridgeshire
Proposed Submission
Policies Map: July 2013**
Inset No. 4 Balsham
Map 2 of 2
Scale 1:5000

Reproduced from the Ordnance Survey Mapping with the permission of the Controller of Her Majesty's Stationery Office © Crown Copyright. Unauthorised reproduction infringes Crown Copyright and may lead to prosecution or civil proceedings.

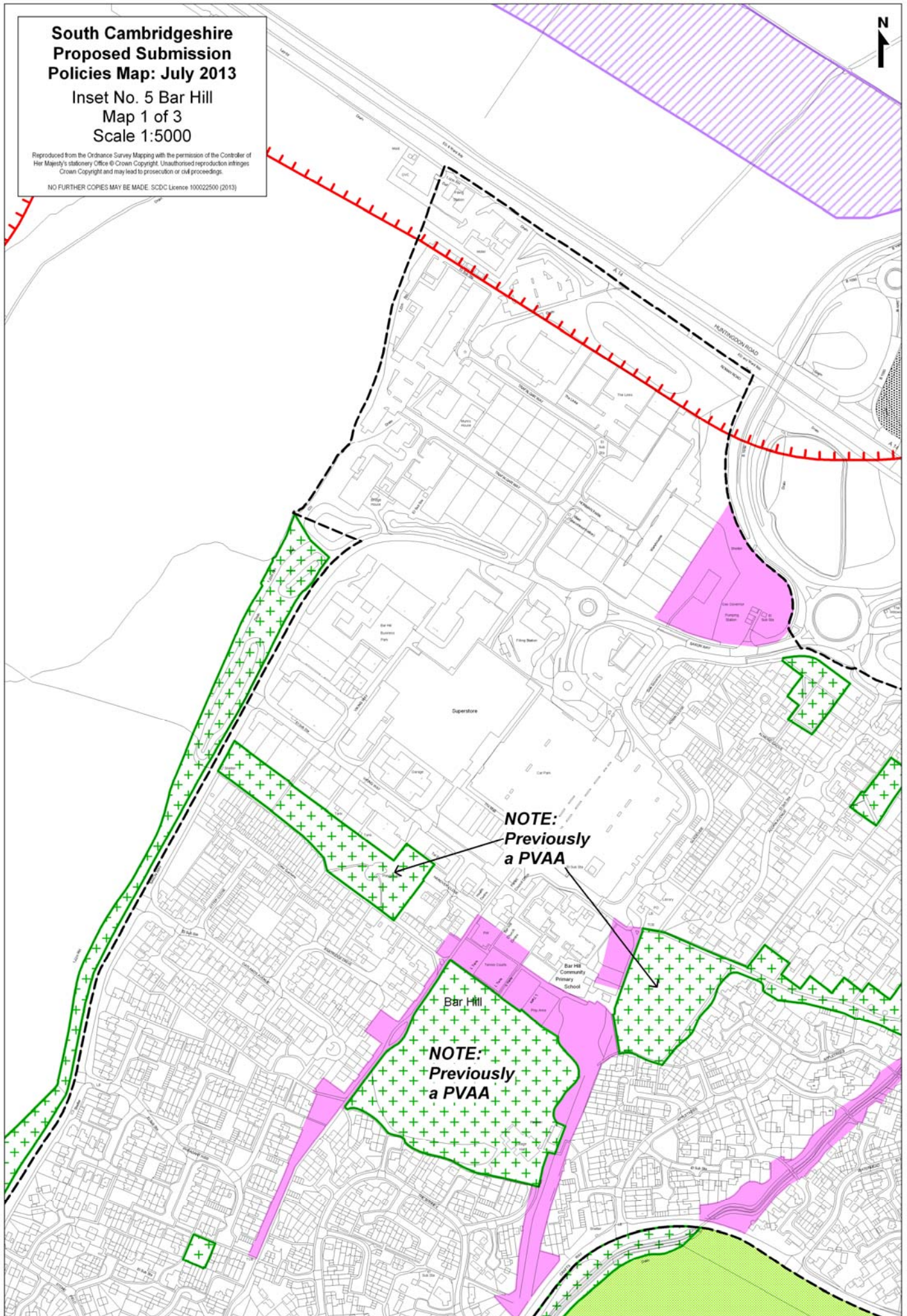
NO FURTHER COPIES MAY BE MADE. SCDC Licence 100022500 (2013)

**South Cambridgeshire
Proposed Submission
Policies Map: July 2013**

Inset No. 5 Bar Hill
Map 1 of 3
Scale 1:5000

Reproduced from the Ordnance Survey Mapping with the permission of the Controller of Her Majesty's Stationery Office © Crown Copyright. Unauthorised reproduction infringes Crown Copyright and may lead to prosecution or civil proceedings.

NO FURTHER COPIES MAY BE MADE. SDCDC Licence 100022500 (2013)



**NOTE:
Previously
a PVAA**

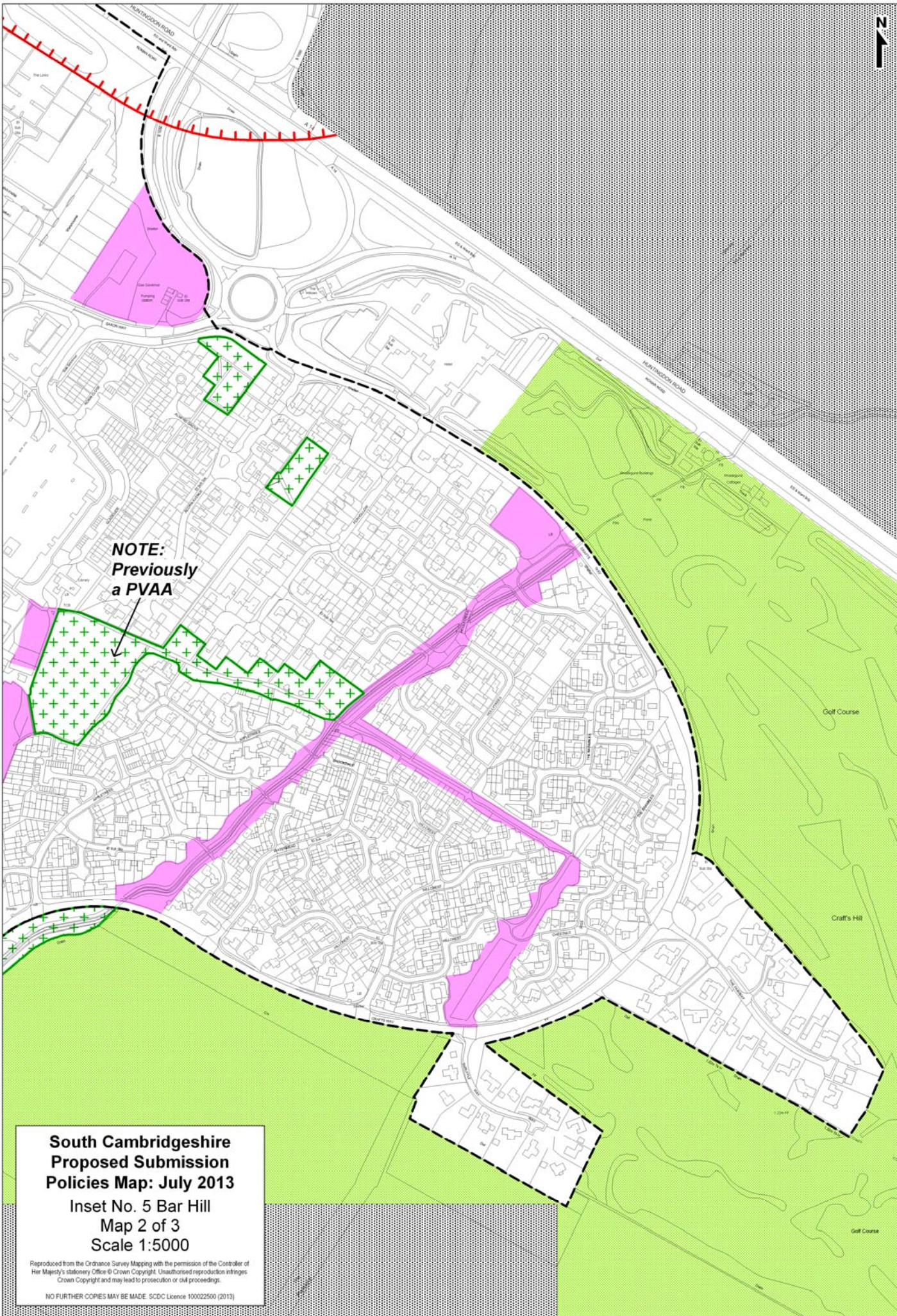
**NOTE:
Previously
a PVAA**

Bar Hill

Bar Hill Community Primary School

Superstore

HEATINGS ROAD

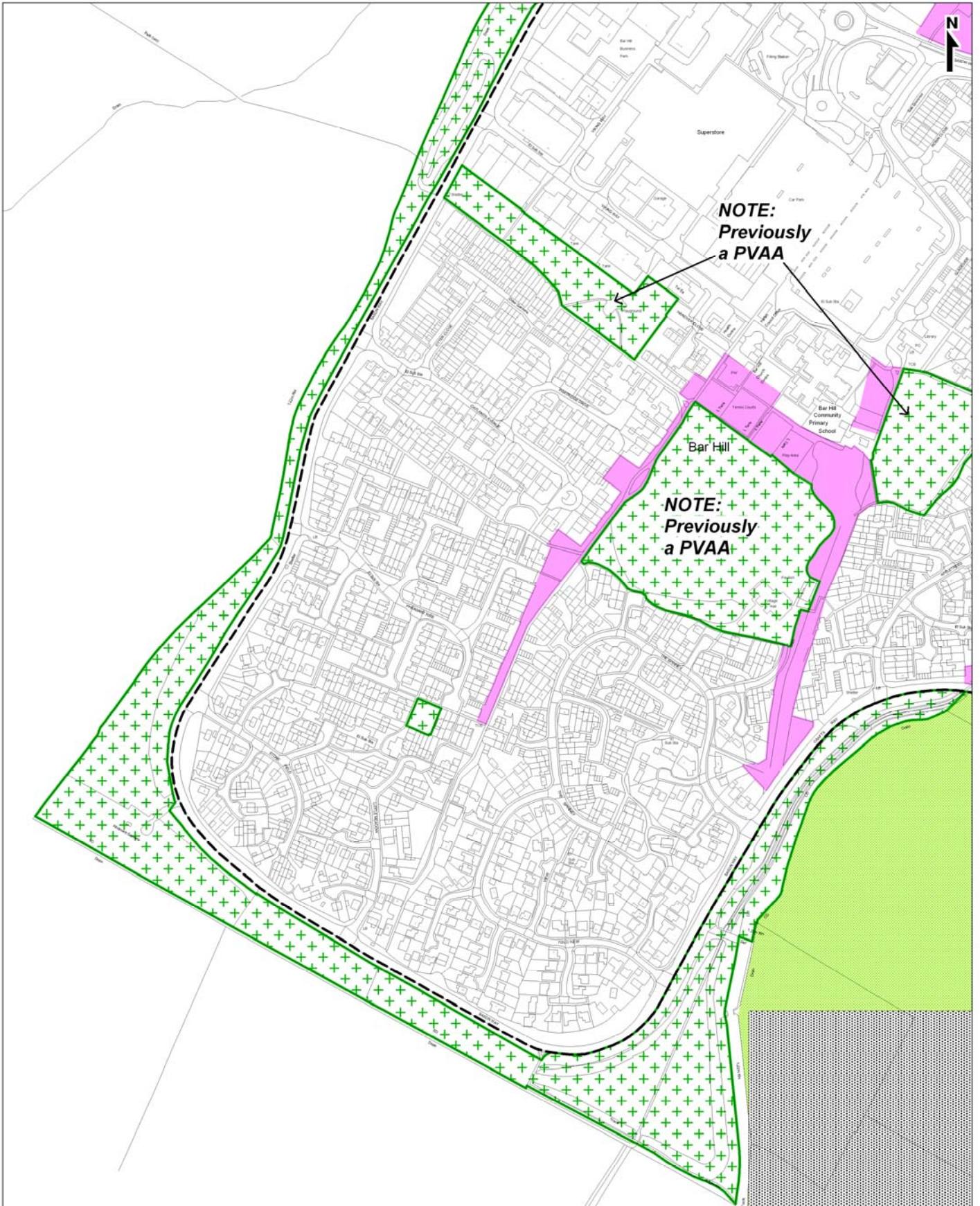


NOTE:
Previously
a PVAA

**South Cambridgeshire
Proposed Submission
Policies Map: July 2013**
Inset No. 5 Bar Hill
Map 2 of 3
Scale 1:5000

Reproduced from the Ordnance Survey Mapping with the permission of the Controller of Her Majesty's Stationery Office © Crown Copyright. Unauthorised reproduction infringes Crown Copyright and may lead to prosecution or civil proceedings.

NO FURTHER COPIES MAY BE MADE. SCDC License 100022500 (2013)



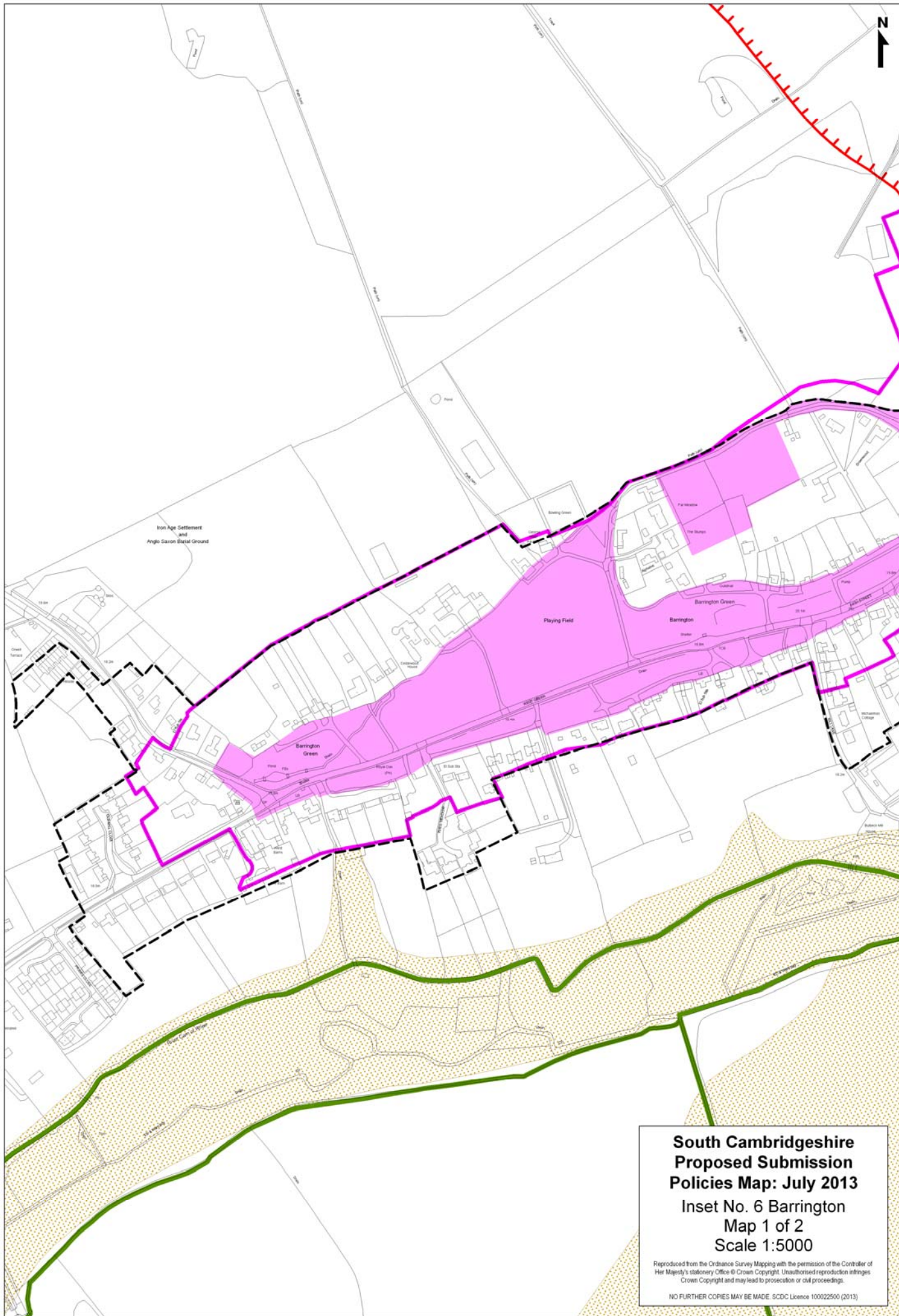
**NOTE:
Previously
a PVAA**

**NOTE:
Previously
a PVAA**

**South Cambridgeshire
Proposed Submission
Policies Map: July 2013**
 Inset No. 5 Bar Hill
 Map 3 of 3
 Scale 1:5000

Reproduced from the Ordnance Survey Mapping with the permission of the Controller of Her Majesty's Stationery Office © Crown Copyright. Unauthorised reproduction infringes Crown Copyright and may lead to prosecution or civil proceedings.

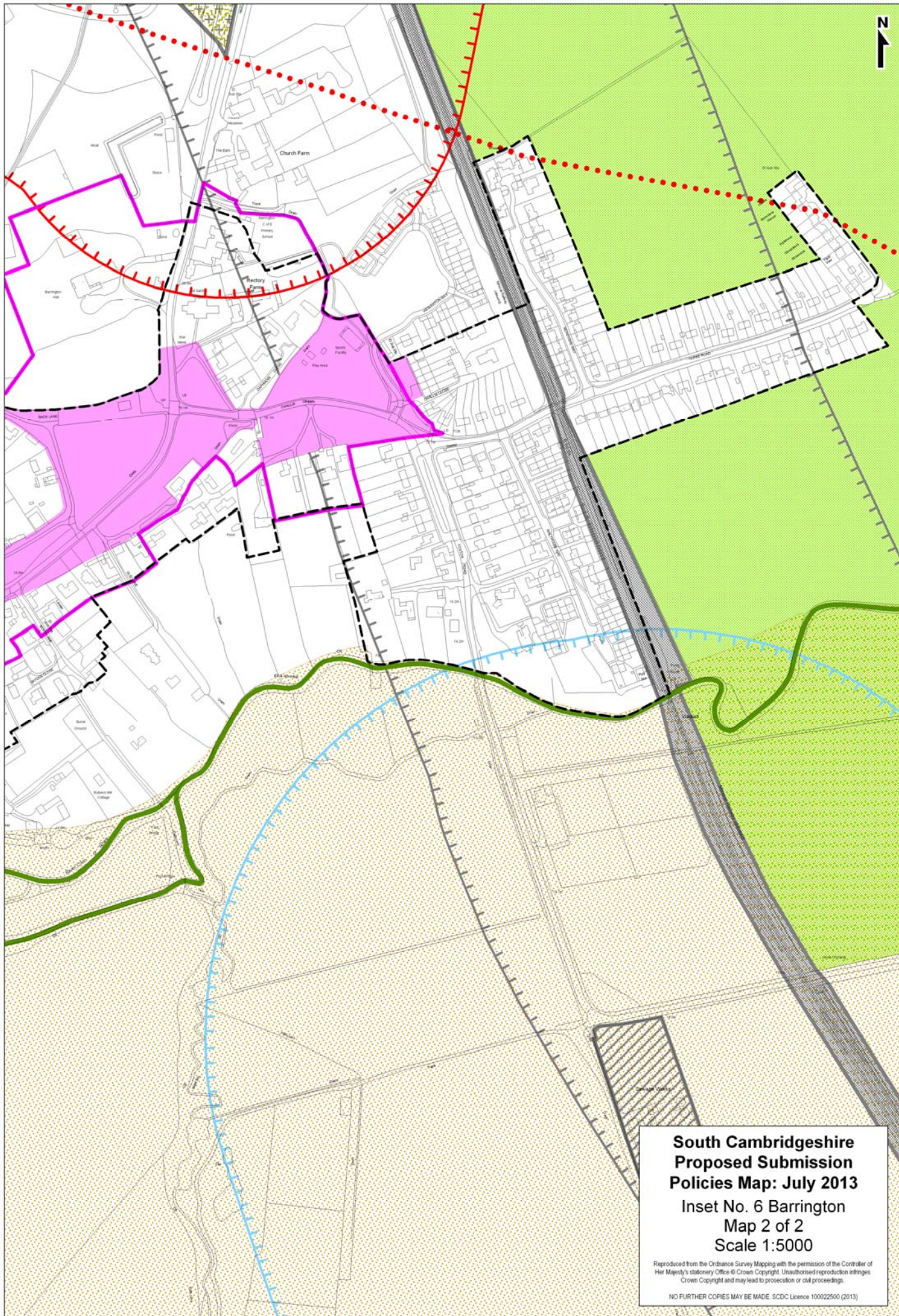
NO FURTHER COPIES MAY BE MADE. SCDC Licence 100022500 (2013)



**South Cambridgeshire
Proposed Submission
Policies Map: July 2013**
Inset No. 6 Barrington
Map 1 of 2
Scale 1:5000

Reproduced from the Ordnance Survey Mapping with the permission of the Controller of Her Majesty's Stationery Office © Crown Copyright. Unauthorised reproduction infringes Crown Copyright and may lead to prosecution or civil proceedings.

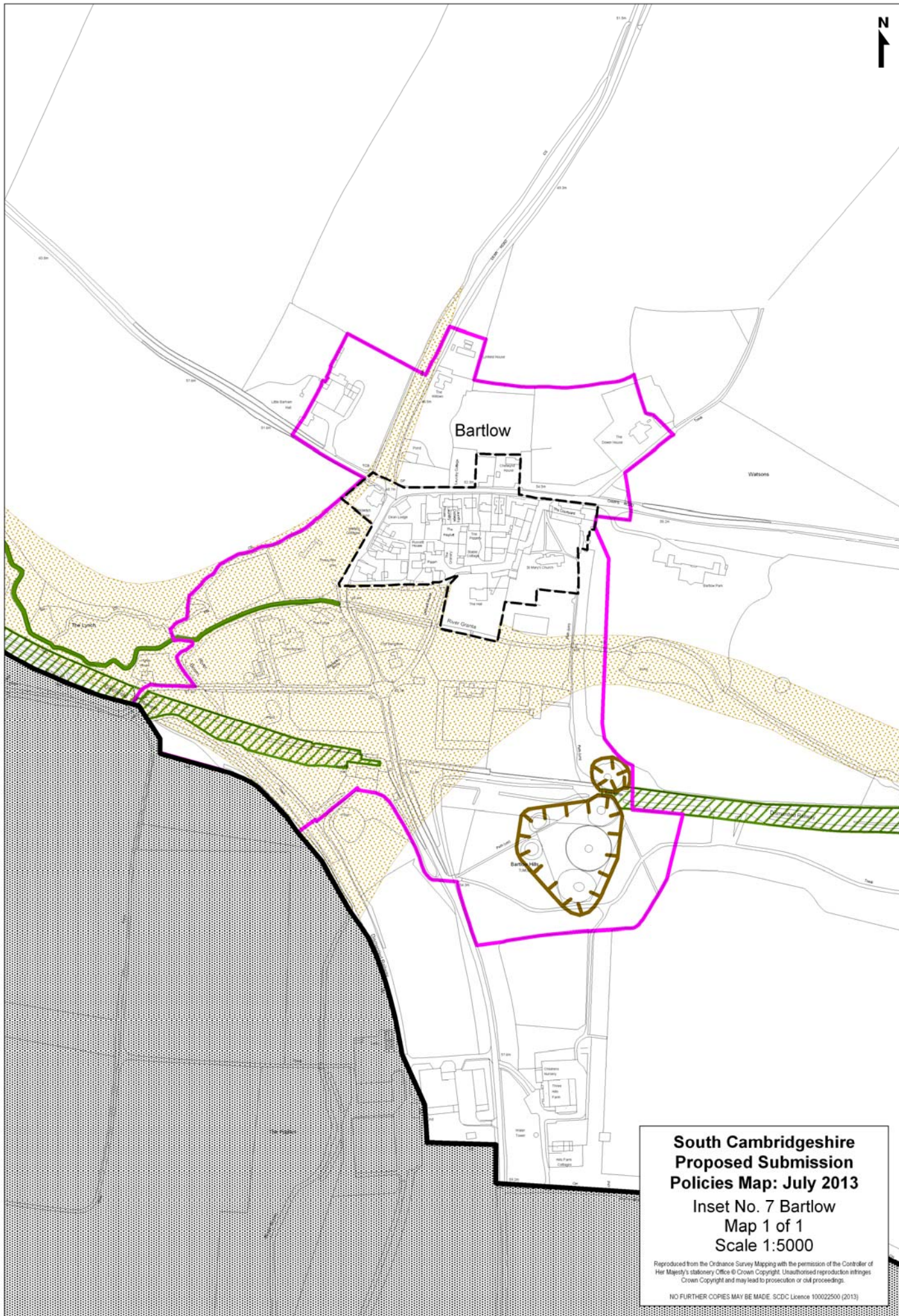
NO FURTHER COPIES MAY BE MADE. SCDC Licence 100022500 (2013)



**South Cambridgeshire
Proposed Submission
Policies Map: July 2013**
Inset No. 6 Barrington
Map 2 of 2
Scale 1:5000

Reproduced from the Ordnance Survey Mapping with the permission of the Controller of Her Majesty's Stationery Office © Crown Copyright. Unauthorised reproduction infringes Crown Copyright and may lead to prosecution or civil proceedings.

NO FURTHER COPIES MAY BE MADE. SCDC Licence 100022500 (2013)



**South Cambridgeshire
Proposed Submission
Policies Map: July 2013**

**Inset No. 7 Bartlow
Map 1 of 1
Scale 1:5000**

Reproduced from the Ordnance Survey Mapping with the permission of the Controller of Her Majesty's Stationery Office © Crown Copyright. Unauthorised reproduction infringes Crown Copyright and may lead to prosecution or civil proceedings.

NO FURTHER COPIES MAY BE MADE. SCDC Licence 100022500 (2013)



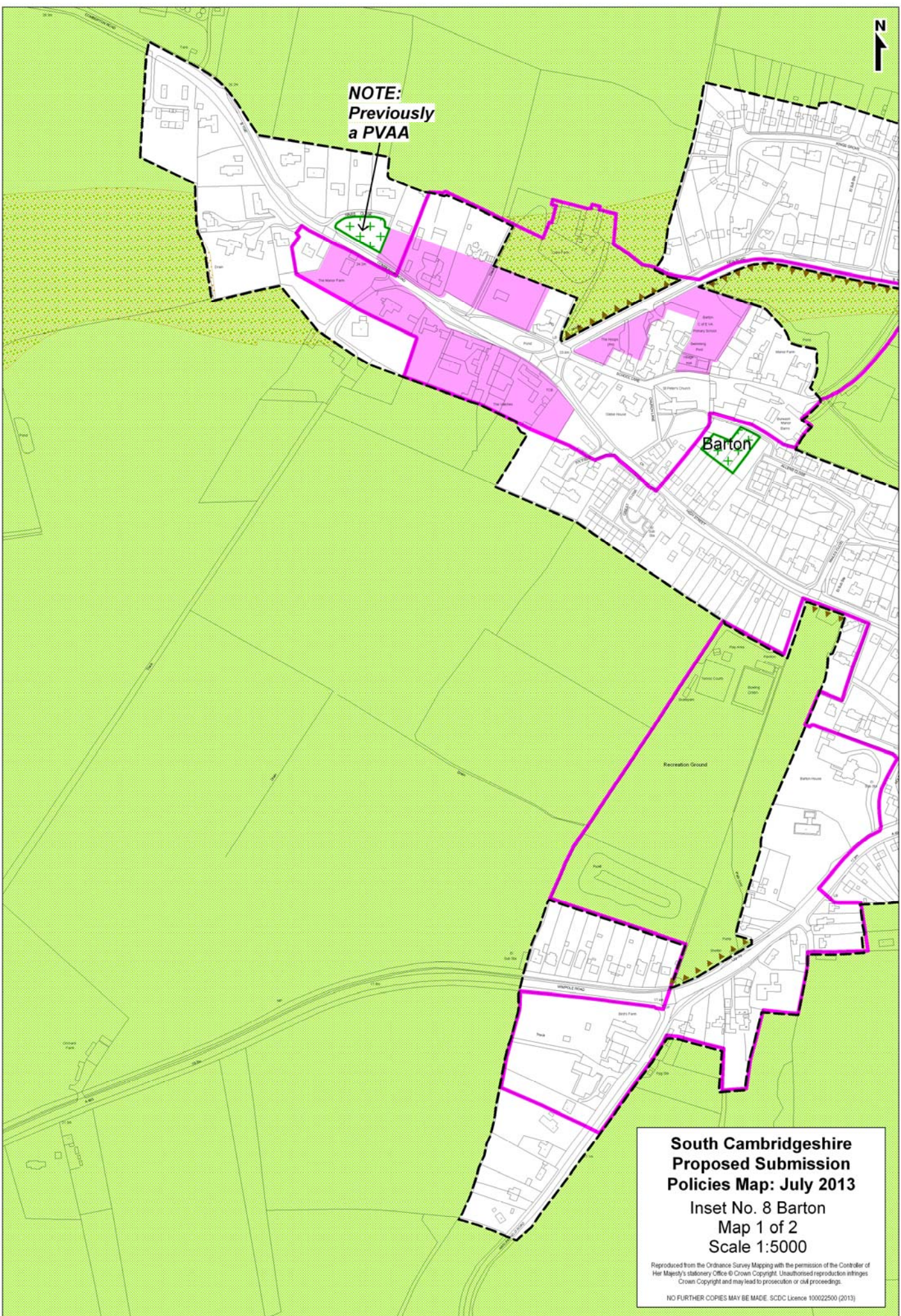
NOTE:
Previously
a PVAA

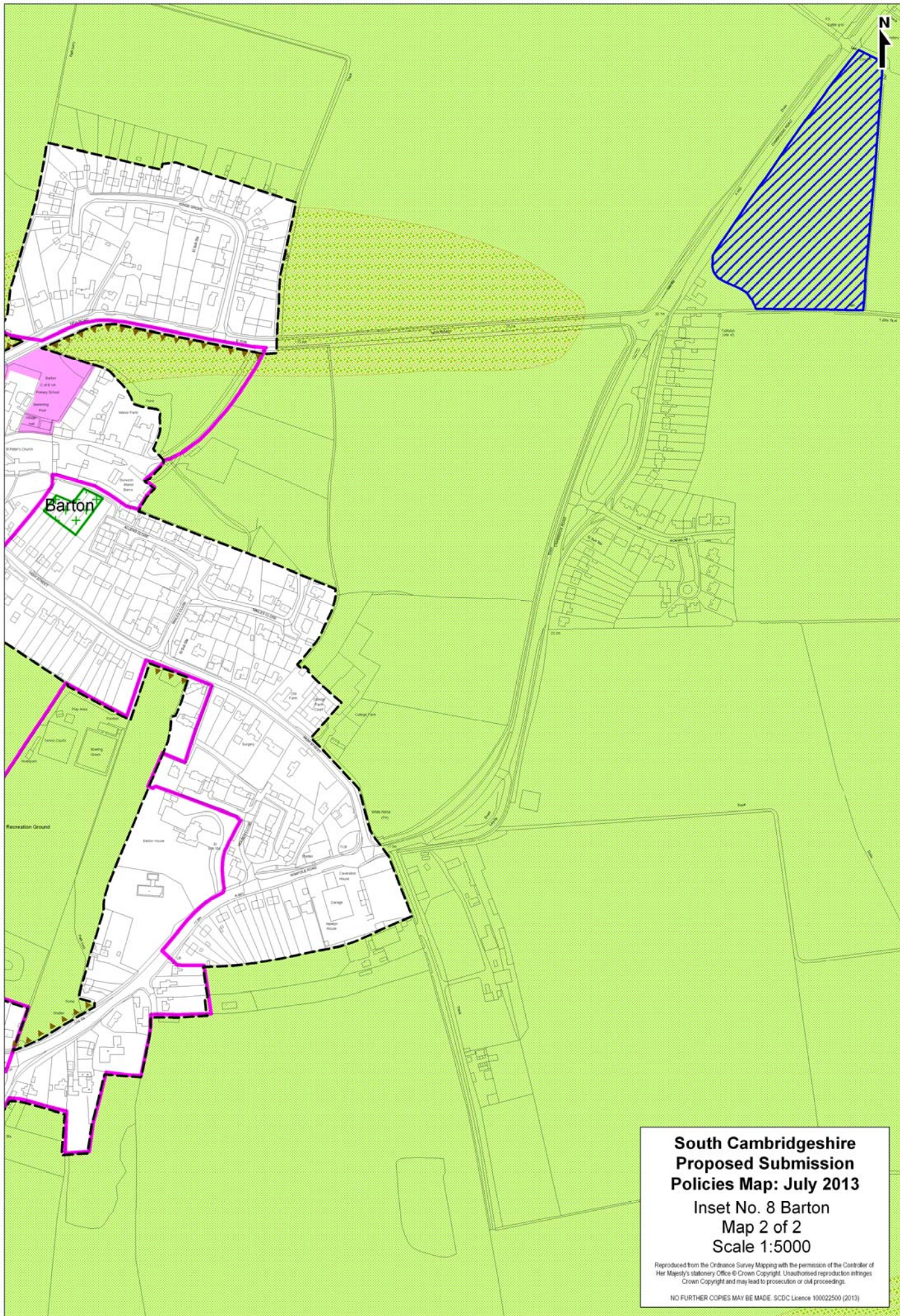
Barton

**South Cambridgeshire
Proposed Submission
Policies Map: July 2013**
Inset No. 8 Barton
Map 1 of 2
Scale 1:5000

Reproduced from the Ordnance Survey Mapping with the permission of the Controller of Her Majesty's Stationery Office © Crown Copyright. Unauthorised reproduction infringes Crown Copyright and may lead to prosecution or civil proceedings.

NO FURTHER COPIES MAY BE MADE. SCDC Licence 100022500 (2013)



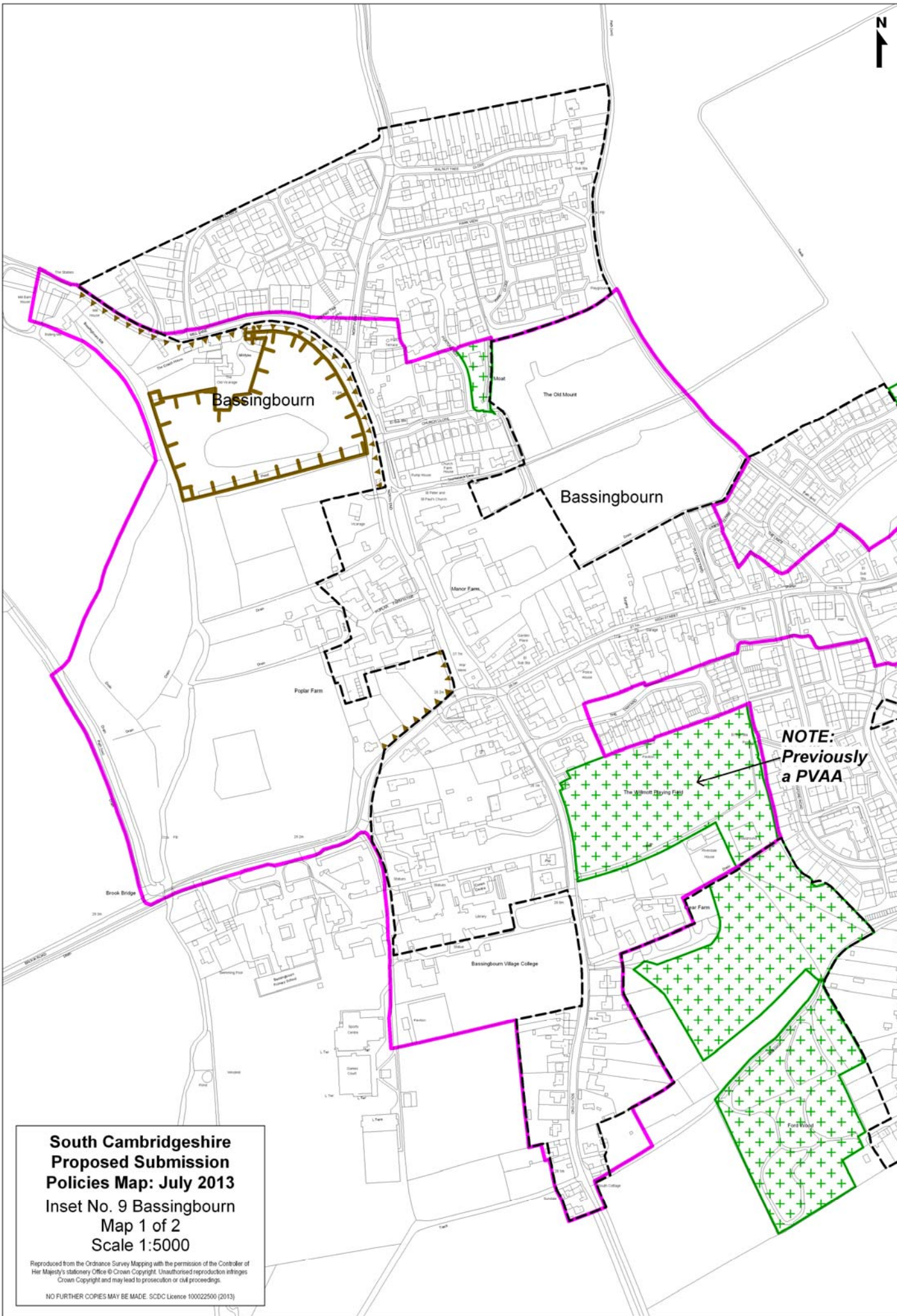


**South Cambridgeshire
Proposed Submission
Policies Map: July 2013**

**Inset No. 8 Barton
Map 2 of 2
Scale 1:5000**

Reproduced from the Ordnance Survey Mapping with the permission of the Controller of Her Majesty's Stationery Office © Crown Copyright. Unauthorised reproduction infringes Crown Copyright and may lead to prosecution or civil proceedings.

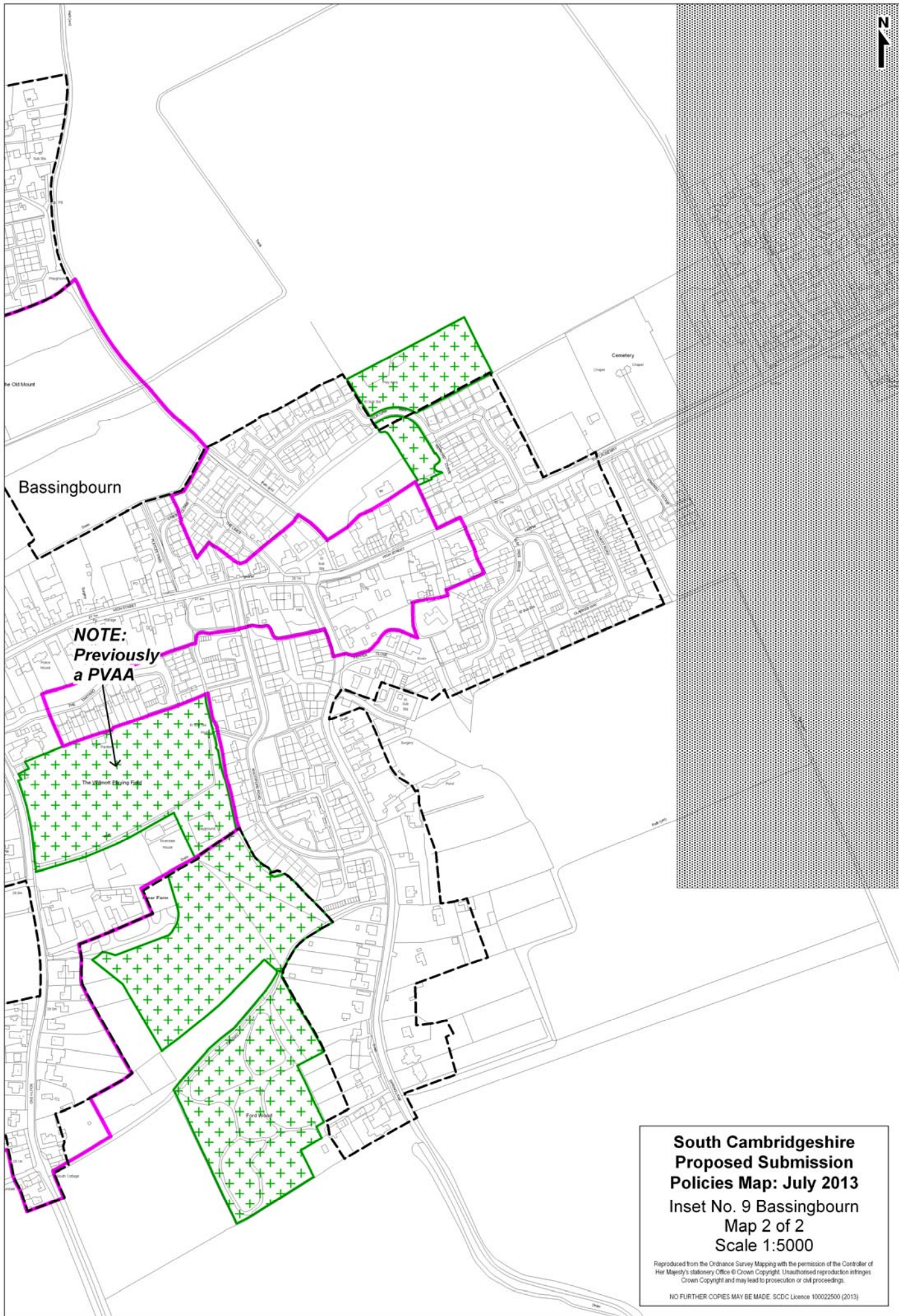
NO FURTHER COPIES MAY BE MADE. SCDC Licence 100022500 (2013)



**South Cambridgeshire
Proposed Submission
Policies Map: July 2013**
Inset No. 9 Bassingbourn
Map 1 of 2
Scale 1:5000

Reproduced from the Ordnance Survey Mapping with the permission of the Controller of Her Majesty's Stationery Office © Crown Copyright. Unauthorised reproduction infringes Crown Copyright and may lead to prosecution or civil proceedings.

NO FURTHER COPIES MAY BE MADE. SCDC Licence 100022500 (2013)



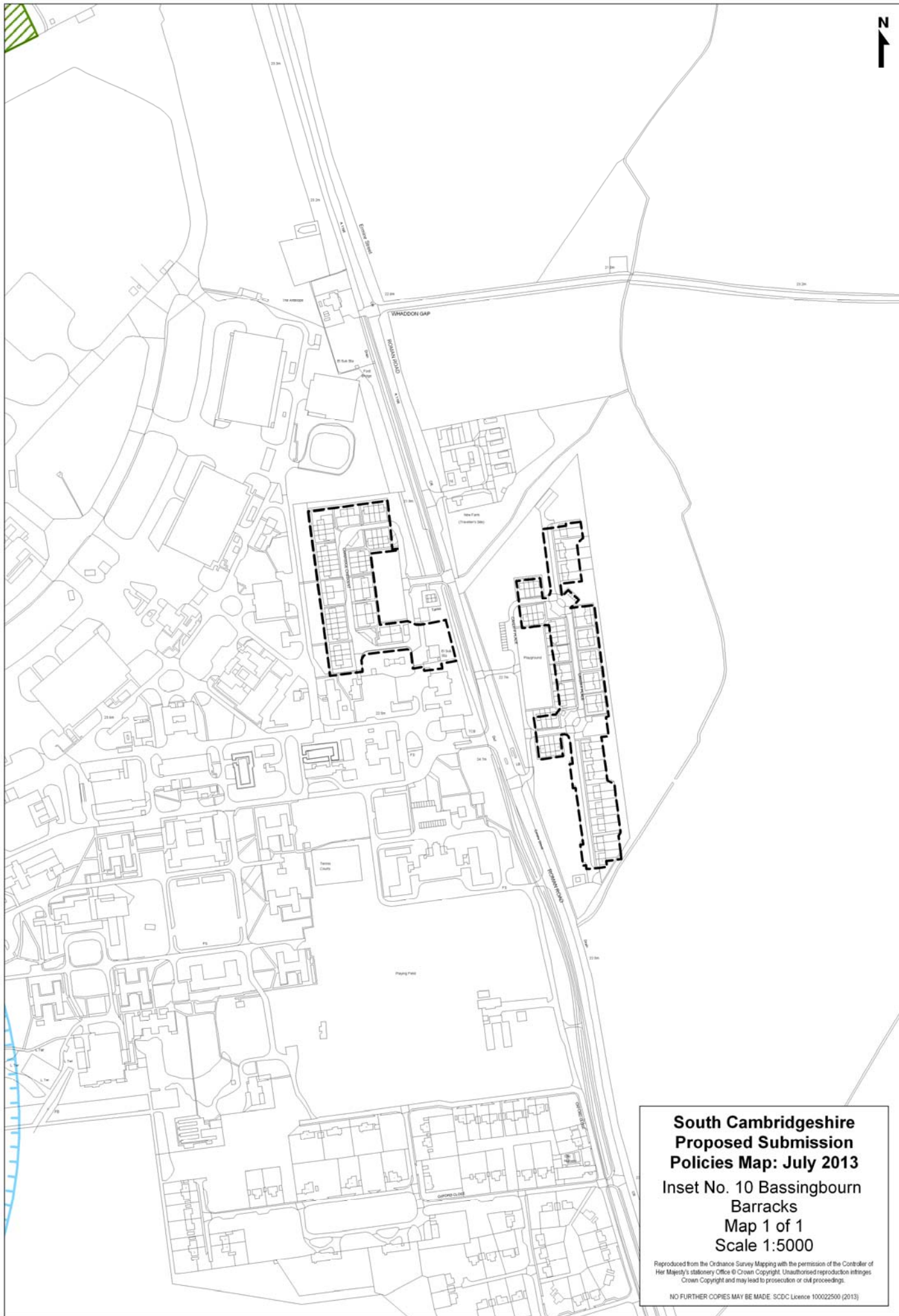
Bassingbourn

NOTE:
Previously
a PVAA

**South Cambridgeshire
Proposed Submission
Policies Map: July 2013**
Inset No. 9 Bassingbourn
Map 2 of 2
Scale 1:5000

Reproduced from the Ordnance Survey Mapping with the permission of the Controller of Her Majesty's Stationery Office © Crown Copyright. Unauthorised reproduction infringes Crown Copyright and may lead to prosecution or civil proceedings.

NO FURTHER COPIES MAY BE MADE. SCDC Licence 100022500 (2013)



**South Cambridgeshire
Proposed Submission
Policies Map: July 2013**
Inset No. 10 Bassingbourn
Barracks
Map 1 of 1
Scale 1:5000

Reproduced from the Ordnance Survey Mapping with the permission of the Controller of Her Majesty's Stationery Office © Crown Copyright. Unauthorised reproduction infringes Crown Copyright and may lead to prosecution or civil proceedings.

NO FURTHER COPIES MAY BE MADE. SCDC Licence 100022500 (2013)